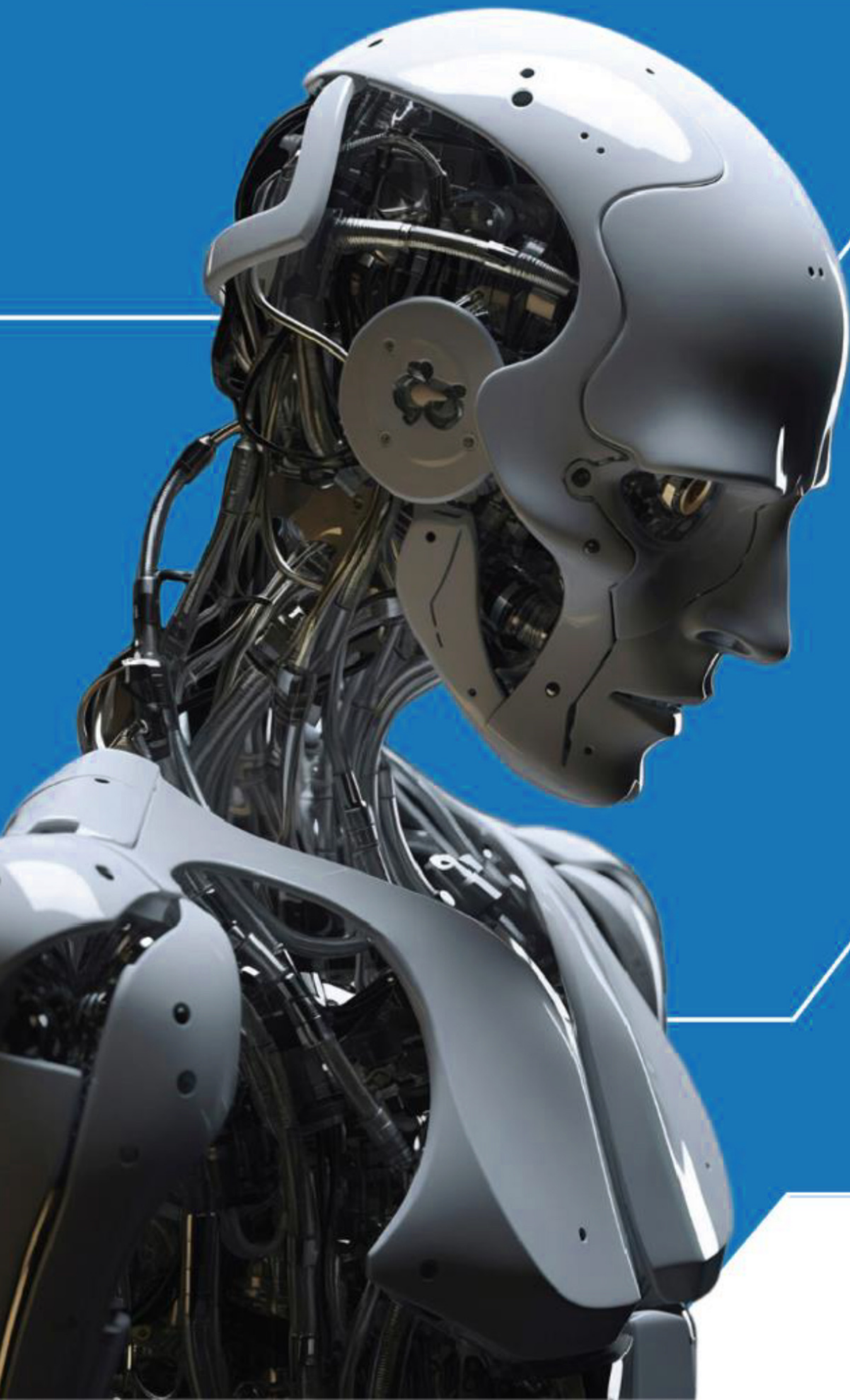




CARIBBEAN
EXAMINATIONS
COUNCIL

FREQUENTLY ASKED QUESTIONS

**For Standards and
Guidelines for the Use
of Artificial Intelligence
in Assessments**





FREQUENTLY ASKED QUESTIONS **STANDARDS AND GUIDELINES FOR THE USE OF AI IN ASSESSMENTS**

- 1) Can AI be used in CXC® examinations?

The use of AI during examinations is strictly prohibited.

- 2) At present, is AI permitted solely for use in SBAs?

Yes, the use of AI is only permitted in the SBA.

- 3) Should teachers mark and submit candidate work which was **created** with the use of AI?

No, Level 4 in the Adapted AI Assessment Scale (AI task completion, Human Evaluation) is not permitted at this time. Teachers must be guided by the Council's acceptable use of AI when marking SBAs. Details can be found in the CXC® Standards and Guidelines for the Use of AI in Assessment <https://www.cxc.org/ai-standards-and-guidelines/>. See extract for guidance.

Table 1. Adapted Scale Levels and Descriptors for the AI Assessment Scale (AIAS)

1	NO AI	The assessment is completed entirely without AI assistance. This level ensures that candidates rely solely on their knowledge, understanding, and skills. Use of AI is not allowed at any point during the assessment.
2	AI-ASSISTED IDEA GENERATION AND STRUCTURING	AI can be used in the assessment for brainstorming, creating structures, and generating ideas for improving work. No AI content is allowed in the final submission. However, the prompts used must be documented in the Appendix to the work submitted.
3	AI-ASSISTED EDITING AND PRESENTATION ENHANCEMENT	AI can be used to make improvements to the clarity or quality of candidate created work to improve the final output, but no new content can be created using AI. Additionally, AI can be used to generate videos, gifs, among others to improve the presentation of submitted work. However, the output must be appropriately cited. AI can be used but must be appropriately cited and referenced.
4	AI TASK COMPLETION, HUMAN EVALUATION	AI is used to complete certain elements of the task, with candidates providing discussion or commentary on the AI-generated content. This level requires critical engagement with AI generated content and the evaluation of its output. AI can be used to complete specified tasks in the assessment. Any AI created content must be cited and prompts documented in the Appendix.

Adapted from Perkins et. al (2024)

- 4) Can a candidate use AI to generate code for their Information Technology / Computer Science SBA?

Candidates are prohibited from using AI to generate code as such output cannot be considered their own work.

- 5) Can I use AI to suggest a topic, provided that, I collect and develop the content on my own?

Yes, AI can be used for ideation.

6) Can a candidate use AI to generate survey questions?

If the SBA rubric allocates marks for designing the survey questions, then the use of AI is not permitted.

7) Is the use of AI permitted for generating graphs to support analysis?

Yes, provided that the rubric does not allocate marks for the graphs produced.

8) Given the current structure of the English SBA, there is no designated section for citing sources or tools. For instance, if a candidate uses Grammarly, where should they acknowledge this within the SBA?

A reference page should be included at the end of the SBA.

9) In what ways can AI be applied to the preparation of lab reports?

AI may be utilized to support the formatting or editing written reports.

10) Is the use of AI permitted for generating materials such as videos or articles in the English SBA?

The nature of the English SBA requires the use of authentic materials. As such, AI should not be used to generate the articles.

11) Can a candidate use AI to assist with writing the analysis and interpretation of data for Social Studies SBA?

Candidates must conduct their own analysis of the data. Once completed, they may use AI to edit or format their work.

12) Will candidates be marked down if they use AI to paraphrase their SBAs?

In most cases no, however there are some subjects, for example English Language that does not lend itself to AI rephrasing the material written.

13) Are candidates only allowed to use AI platforms approved by CXC®?

Candidates are only allowed to use CXC® approved AI platforms; however, they should cite / reference it. A list of approved AI engines and originality checkers can be found in the CXC® Standards and Guidelines for the Use of AI in Assessment <https://www.cxc.org/ai-standards-and-guidelines/>

14) Is there a cost to use the allowed AI checkers?

CXC® has provided a list of free checkers. A list of approved AI engines and originality checkers can be found in the CXC® Standards and Guidelines for the Use of AI in Assessment <https://www.cxc.org/ai-standards-and-guidelines/>

15) If AI is employed to edit a document, should the original version be submitted alongside the edited one?

No, there is no need to include the original version; however, it must be cited that AI was used.

16) What citation format should candidates use?

Candidates should use the sample citation format provided in the CXC® Standards and Guidelines for the Use of AI in Assessment <https://www.cxc.org/ai-standards-and-guidelines/>

17) What is the acceptable AI similarity score?

The acceptable percentage similarity is set at 20%.

18) How should the AI similarity score be submitted?

After using an originality checker such as Turnitin, a report is generated – submit this report as a part of the SBA portfolio.

19) Is there an acceptable variance on the AI similarity score?

Yes, however if a candidate's similarity score is above 20% the teacher should provide a rationale in the AI disclosure form (<https://www.cxc.org/download-materials/> indicating the reason for accepting the SBA submission as is – note however that this does not guarantee that the candidate will not be penalised.

20) Will CXC® also check for originality on submitted SBAs?

Yes, CXC® will facilitate originality checks.

21) What are the consequences if a candidate's well-written original work is incorrectly flagged as AI-generated?

If a candidate's original work is flagged as AI-generated, the consequences can include academic penalties. However, CXC® also requires human review and supporting evidence before finalising such accusations, and candidates have the right to appeal or defend their work.

22) What are the penalties of misuse of AI?

The misuse of AI can result in a candidate being disqualified or their grades may be cancelled. These penalties are listed in the Regulations for the Conduct of the Council's Examinations <https://www.cxc.org/regulations-and-penalties/>

23) How does this AI checking affect the moderation of science labs?

The teacher is expected to note the incorrect use of AI within the books and the moderator will utilize those comments when remarking the candidate's work. The moderator will submit an irregularity report to CXC®.